

alfafonet[®]

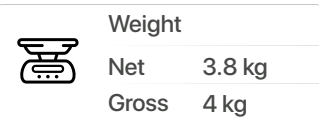
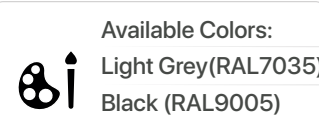
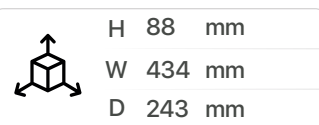
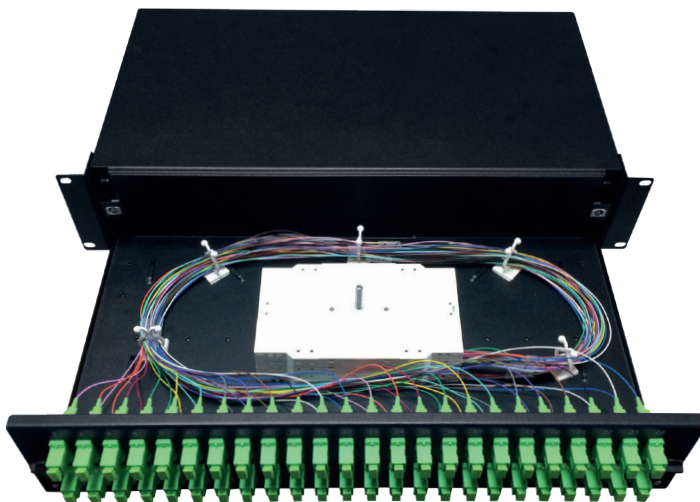
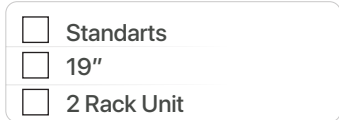
Complete Connectivity Solutions



OPTISLIDE 2RU FIBER TERMINATION PATCH/SPLICE PANEL

TERMINATION PANELS
OptiSlide

OPTISLIDE 2RU FIBER TERMINATION PATCH/SPLICE PANEL



PRODUCT OVERVIEW

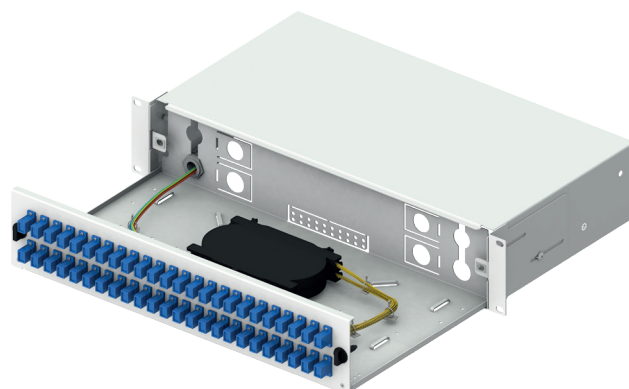
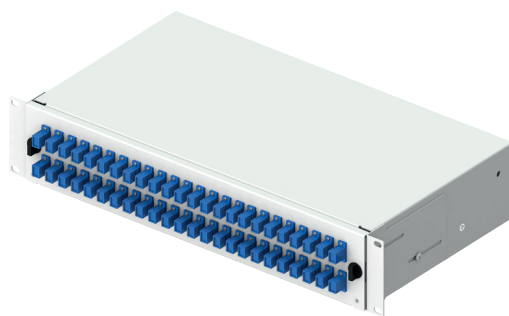
The OptiSlide 2RU sliding patch panel system in its basic form is supplied with the panels unloaded without adaptors ready for you to install the adaptor of your choice. The panel can also be pre-loaded complete with the required adaptor and simple splice management kit, or preloaded with pigtails to meet your project needs. The tray is locked in place with two simple plastic quarter turn lock to operate, when fully extended the tray is designed to lower to 45°, or move the tray to the side and it will lock to lower only 10°. This provides the perfect working platform for simple installation or easy maintenance and access even after the panel is installed in the rack. This solution allows for easy access to the front patch cords as well as the splice trays and pigtails after being pulled out. Standard panels are available empty for complete field configuration, half-loaded with adaptor plates for field termination and cable assembly installation, or stubbed with a factory-installed cable assembly of a user specified length.

Features

- › Up to 96 fibres in 2RU
- › Printed port numbers on the front plate
- › Available with different front plates
- › (sold separately to reduce stock value)
- › for all type of connectors
- › Adjustable depth in rack
- › Rear cable entry options
- › Light in weight and robust structure

Specifications

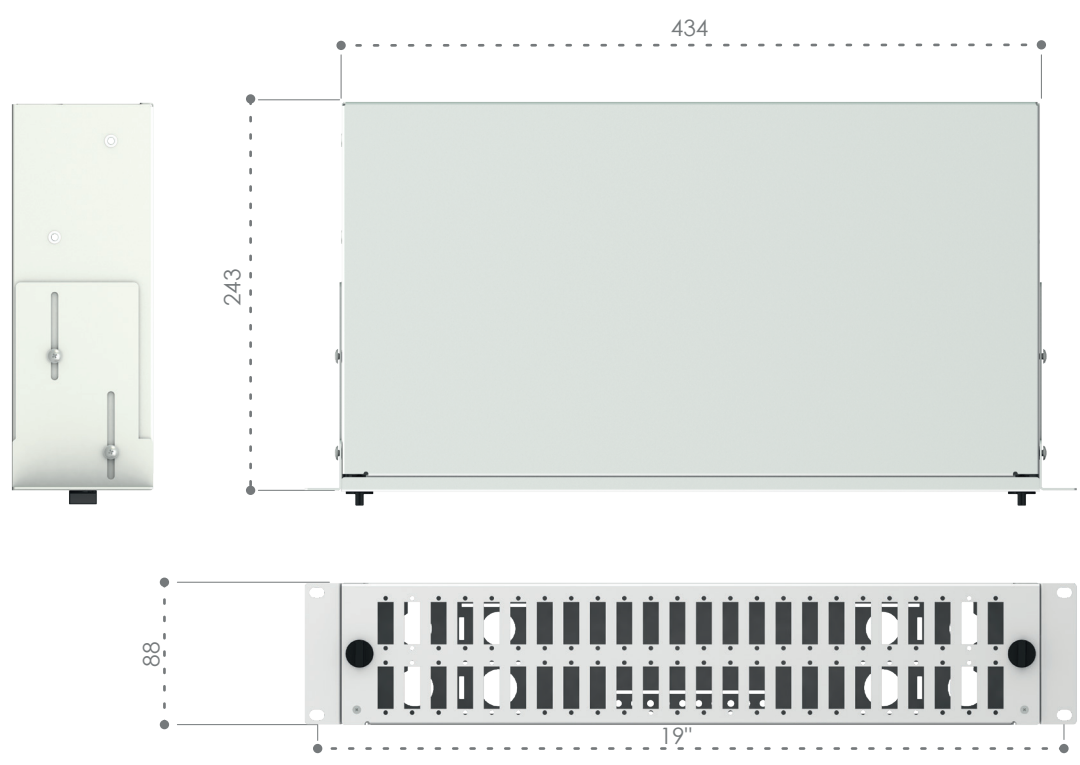
- › Cold Rolled Steel Construction
- › Durable textured powder coat finish available in black(RAL9005) or Light Grey(RAL7035)
- › Universal 19" rack compatibility
- › Cable Entry 21mm(4pcs), Cable Entry 23mm(4pcs)
- › Compliant to RoHS



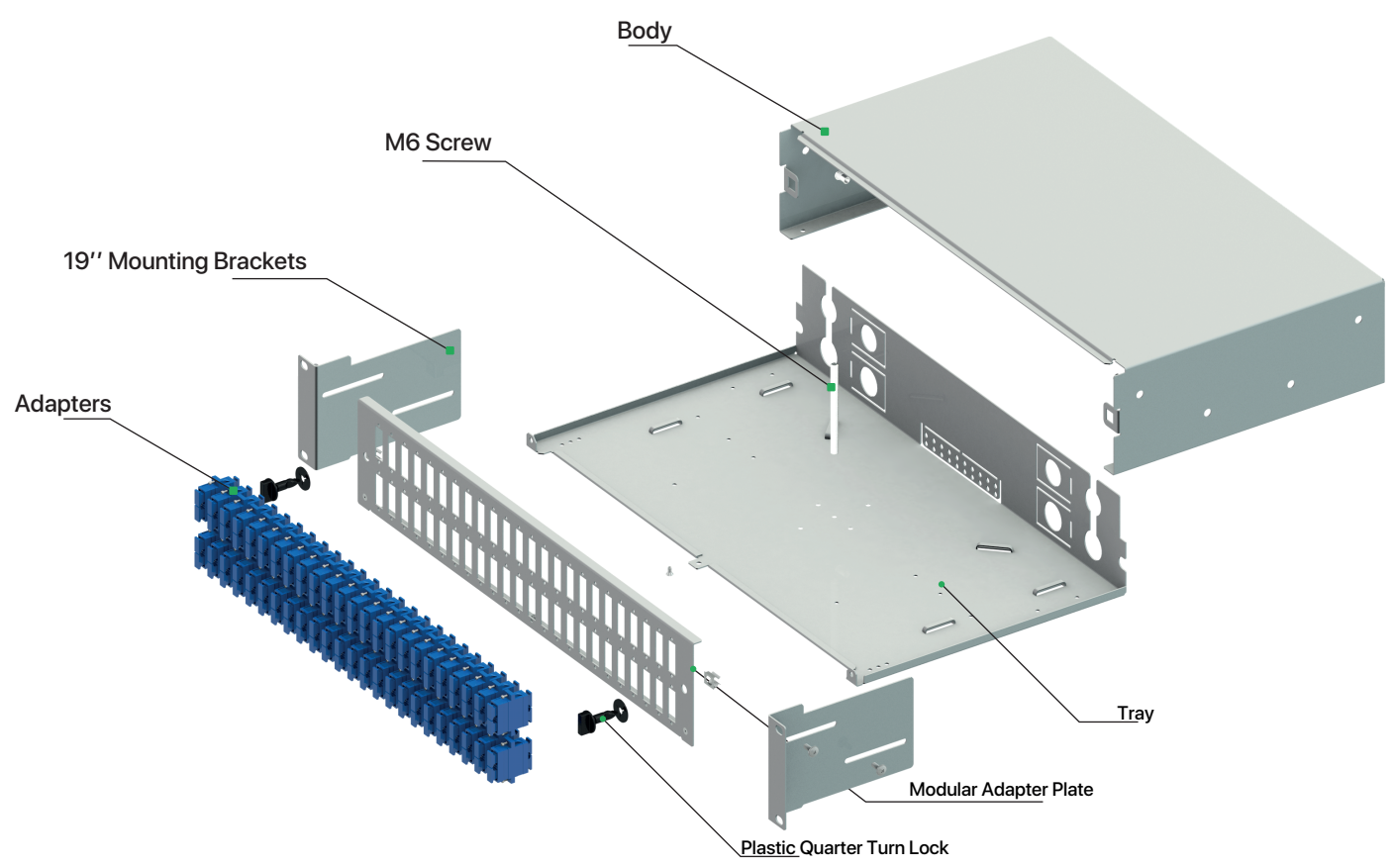
Scan QR Code
View Brochure*

OPTISLIDE 2RU FIBER TERMINATION PATCH/SPLICE PANEL

Dimensions

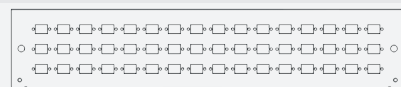


Exploded View



OPTISLIDE 2RU FIBER TERMINATION PATCH/SPLICE PANEL**Ordering Options**48 LC Duplex or 48 E2000 Simplex or
48 SC Simplex Vertical 2RU Front Plate

102002.01-CC

48 LC Duplex or 48 E2000 Simplex or
48 SC Simplex Horizontal 2RU Front Plate

102002.02-CC



48 SC Duplex or 48 LC Quad Vertical 2RU Front Plate

102002.03-CC



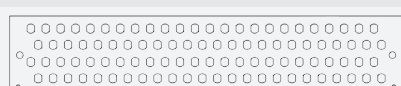
24 SC Duplex or 24 LC Quad Horizontal 2RU Front Plate

102002.04-CC



48 ST or 48 FC (D-Hole) Shifted 2RU Front Plate

102002.05-CC



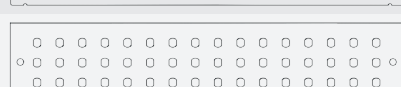
96 ST or 96 FC (D-Hole) 2RU Front Plate

102002.06-CC



48 E2000 Compact (RdM) 2RU Front Plate

102002.07-CC



48 ST or 48 FC (D-Hole) 2RU Front Plate

102002.08-CC

Ordering Guide

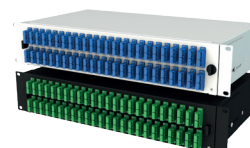
	Ordering Option	Color	Splice Cassette	Splice Cassette Quantity		Adapter Type		Structure		Mode		Pigtail		Additional Options	
102002 In Ordering Option Article		Light Grey LG	Empty 0	Zero 0	Empty 0	Empty 0	Empty 0	Empty 0	Empty 0	Empty 0	Empty 0	Empty 0	Empty 0	Empty 0	Empty 0
		Black BL	ALF-CMPC 1	One 1	LC 1	Simplex 1	Single / PC 1	Inside Plastic Bag 1 Color 1	Screwed Rear to Front 1						
			ALF-TR 2	Two 2	SC 2	Duplex 2	Single / APC 2	Inside Plastic Bag 6 Color 2	Screwed Front to Rear 2						
			ALF-A 3	Three 3	ST 3	Quad 3	Multimode / OM1 3	Inside Plastic Bag 12 Color 3	Screwed with Nut 3						
			ALF-B 4	Four 4	FC 4		Multimode / OM2 4	Fully Assembled 1 Color 4							
			ALF-C 5	Five 5	E2000 5		Multimode / OM3 5	Fully Assembled 6 Color 5							
			ALF-D 6	Six 6	LC Duplex Square 6		Multimode / OM4 6	Fully Assembled 12 Color 6							
				Seven 7			Multimode / OM5 7								
				Eight 8											

102002.01-CC* / 0000000Scan QR Code*
View Brochure**102002-CC***

OptiSlide 2RU Fibre Optic Termination Panel, 19" - Sliding Mechanically, without front plate, Colour: Black-RAL9005 or Light Grey-RAL7035, (1pcs. PG13.5 Plastic Gland, 1pcs. PG16 Plastic Gland, 6pcs. Adhesive Bunny Clips, 4pcs. 2,5mmX10 Cable Ties, 2pcs. Plastic Quarterturn Lock, 6pcs. M3 Fixing Screw)

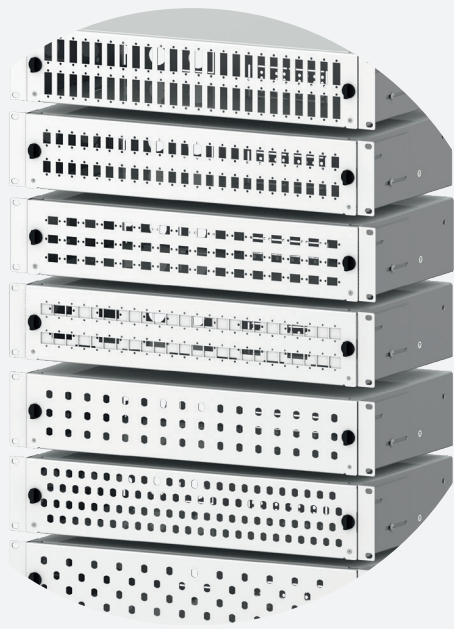
*CC=LG for Light Grey RAL 7035 & BL for Black RAL 9005 for customers to define while ordering.

*Brochure contains key features, optional part packing details, standart accessories.



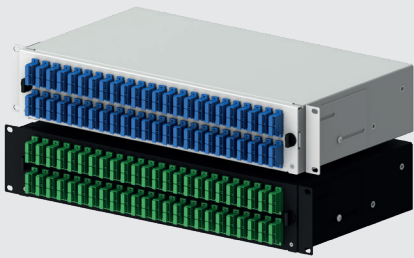
OPTISLIDE 2RU FIBER TERMINATION PATCH/SPLICE PANEL

Key Features



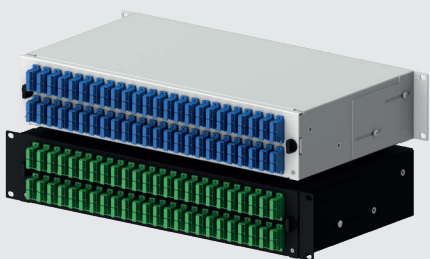
✓ Modular adapter plates

Available with different front plates (sold separately to reduce stock value) for all type of connectors



✓ Adjustable Mounting Brackets and Rear Assembly

Adjustable depth in rack cause of mounting brackets positioning

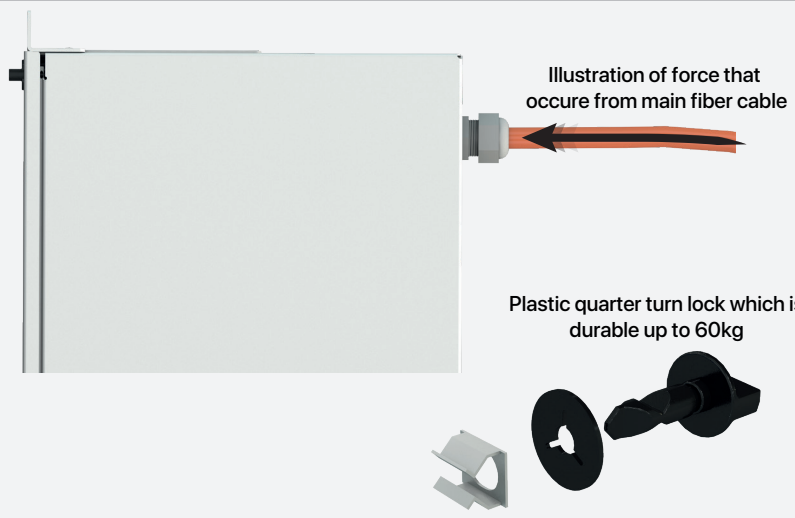


Rear mounting assembly option

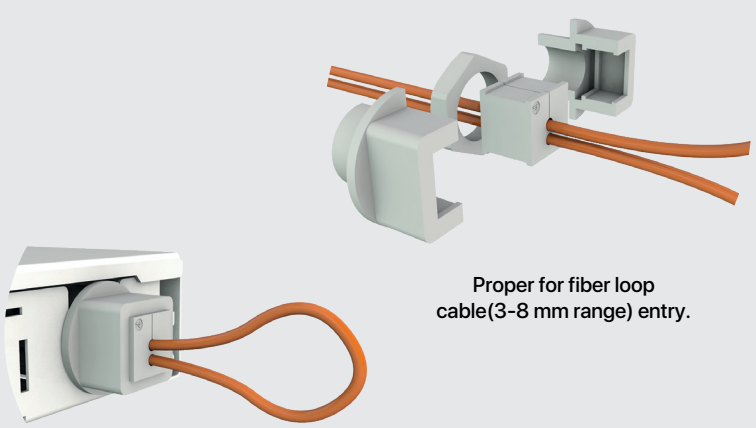


OPTISLIDE 2RU FIBER TERMINATION PATCH/SPLICE PANEL

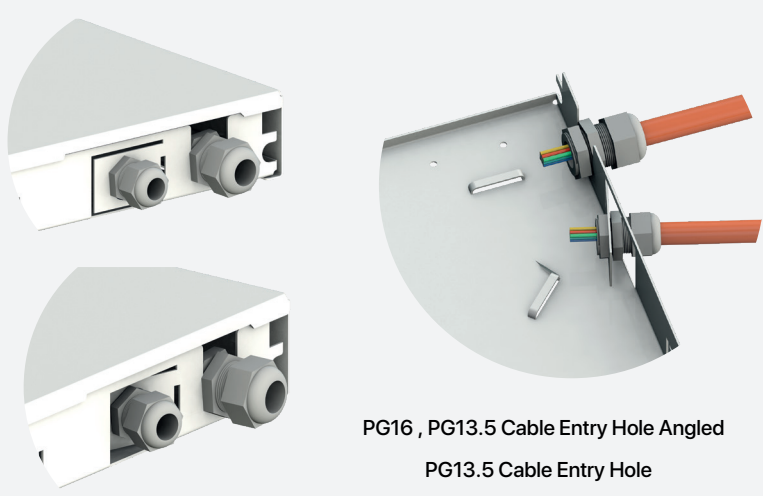
Key Features



✓ **Resistance to horizontal force up to 60 kg**



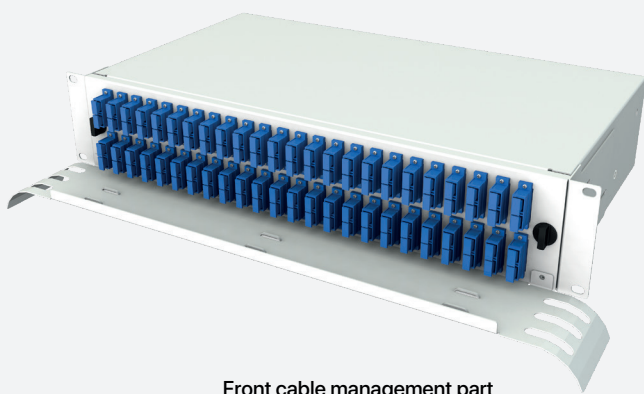
✓ **Loop Cable Option**
Part Number : ALF-LOOP-GLD38



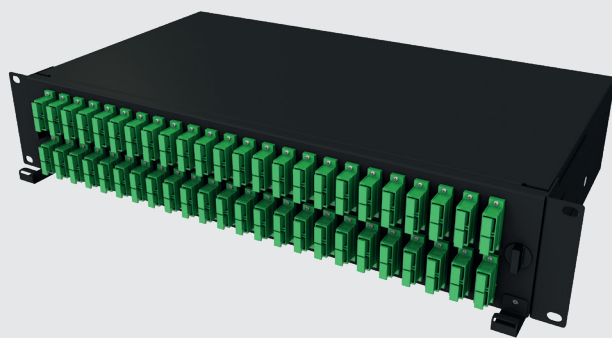
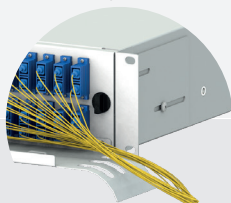
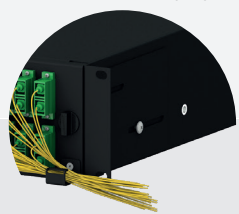
✓ **Different Cable Entry options**

OPTISLIDE 2RU FIBER TERMINATION PATCH/SPLICE PANEL

Front Plate Cable Management Solutions



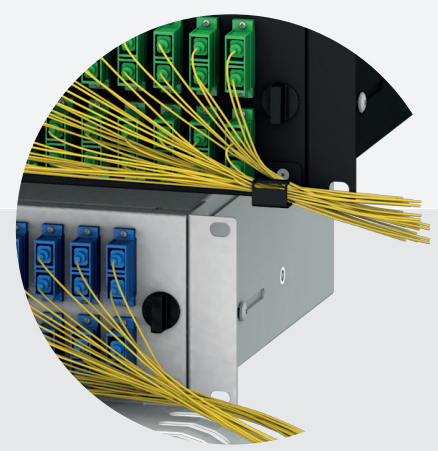
Front cable management part managing and fixing the cables properly



Front cable management ring for holding the cables properly.

✓ Front Cable Management Option

Order No* 102002.98-CC
Front Cable Management Panel

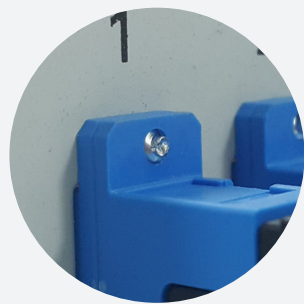


✓ Front Cable Management Ring Option

Order No* 102002.99-CC
Front Cable Management Ring



Screw assembly from front



Screw assembly from back

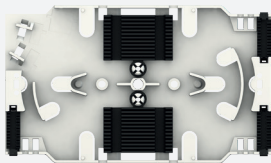


Screw assembly from back with nut

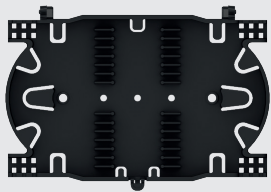
✓ Adapter screw assembly options

OPTISLIDE 2RU FIBER TERMINATION PATCH/SPLICE PANEL

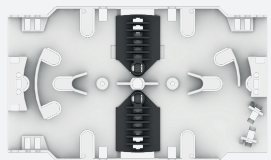
Splice Tray Options



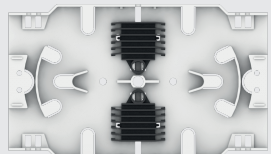
ALF-CMPC



ALF-TR



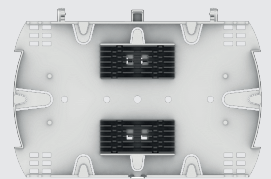
ALF-A



ALF-B

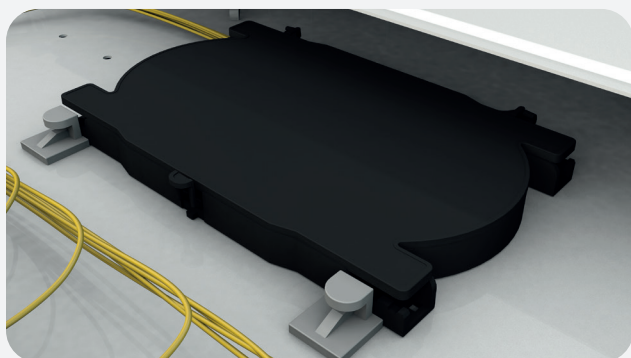


ALF-C



ALF-D

Optional Splice Tray Accesories

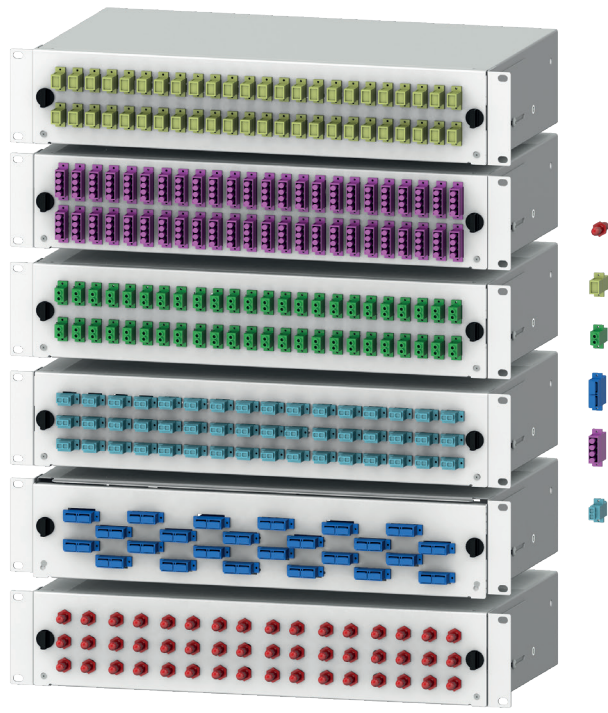


✓ Splice Tray Stabilizer Set

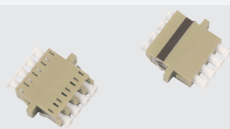
Set contains 2 pieces of plastic part
Part Number : ALF-SPLC-STB

OPTISLIDE 2RU FIBER TERMINATION PATCH/SPLICE PANEL

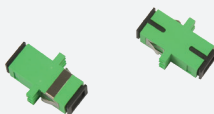
Adapter Series



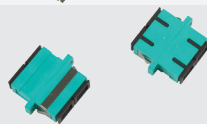
LC Duplex



LC Quad



SC Simplex



SC Duplex



ST



FC



E2000



LC Duplex Square

OPTISLIDE 2RU FIBER TERMINATION PATCH/SPLICE PANEL

Packaging Details

Standart Accesories (Set)

	PG16, PG13.5 Plastic Gland		Plastic Quarter Turn lock x 2
	Bunny Clips x 6		M3x7 Fixing Screw x 6
	Tire wrap x 4		Cage nut x2 (Optional) Part Number : ST-007 (Black) ST-006 (Inox White) ST-003 (White)

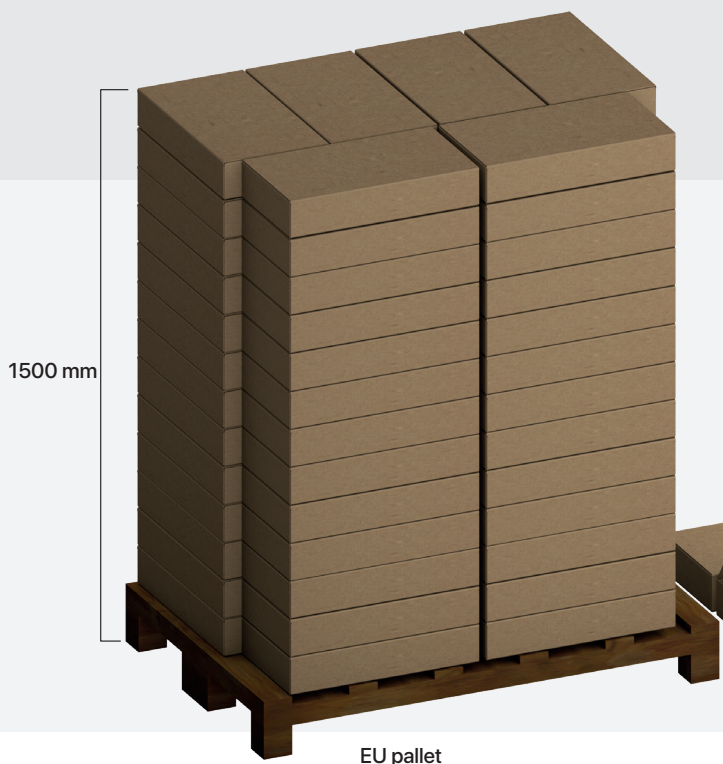


Each front plate wrapped
in the transparent nylon bag.

Front Plate Packacing



1 Front Plate Box includes 60 plates.



EU pallet
1200x800 mm

